

Zebrafish edf1 Antibody (C-term)
Purified Rabbit Polyclonal Antibody (Pab)
Catalog # Azb18721c**Specification**

Zebrafish edf1 Antibody (C-term) - Product Information

Application	WB,E
Primary Accession	Q6PBY3
Other Accession	P69736 , Q9JMG1 , O60869 , Q5ZMC0 , Q3T0V7
Reactivity	Zebrafish
Predicted	Bovine, Chicken, Human, Mouse, Rat
Host	Rabbit
Clonality	Polyclonal
Isotype	Rabbit IgG
Antigen Region	122-146

Zebrafish edf1 Antibody (C-term) - Additional Information**Gene ID** 793036**Other Names**

Endothelial differentiation-related factor 1 homolog, EDF-1, edf1

Target/Specificity

This Zebrafish edf1 antibody is generated from a rabbit immunized with a KLH conjugated synthetic peptide between 122-146 amino acids from the C-terminal region of zebrafish edf1.

Dilution

WB~~1:1000

E~~Use at an assay dependent concentration.

Format

Purified polyclonal antibody supplied in PBS with 0.09% (W/V) sodium azide. This antibody is purified through a protein A column, followed by peptide affinity purification.

Storage

Maintain refrigerated at 2-8°C for up to 2 weeks. For long term storage store at -20°C in small aliquots to prevent freeze-thaw cycles.

Precautions

Zebrafish edf1 Antibody (C-term) is for research use only and not for use in diagnostic or therapeutic procedures.

Zebrafish edf1 Antibody (C-term) - Protein Information**Name** edf1**Function** Probable transcriptional coactivator.

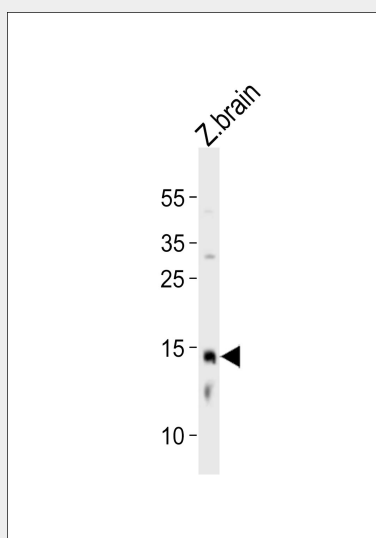
Cellular Location
Nucleus.

Zebrafish edf1 Antibody (C-term) - Protocols

Provided below are standard protocols that you may find useful for product applications.

- [Western Blot](#)
- [Blocking Peptides](#)
- [Dot Blot](#)
- [Immunohistochemistry](#)
- [Immunofluorescence](#)
- [Immunoprecipitation](#)
- [Flow Cytometry](#)
- [Cell Culture](#)

Zebrafish edf1 Antibody (C-term) - Images



Western blot analysis of lysate from zebrafish brain tissue, using Zebrafish edf1 Antibody (C-term) (Cat. #Azb18721c). Azb18721c was diluted at 1:1000. A goat anti-rabbit IgG H&L (HRP) at 1:10000 dilution was used as the secondary antibody. Lysate at 20ug.

Zebrafish edf1 Antibody (C-term) - Background

Probable transcriptional coactivator (By similarity).